



SR-4 Polyclonal Antibody

| | |
|---------------------------|--|
| Catalog No | YP-Ab-12819 |
| Isotype | IgG |
| Reactivity | Human;Mouse;Rat |
| Applications | WB;IHC;IF;ELISA |
| Gene Name | HTR4 |
| Protein Name | 5-hydroxytryptamine receptor 4 |
| Immunogen | The antiserum was produced against synthesized peptide derived from human 5-HT-4. AA range:21-70 |
| Specificity | SR-4 Polyclonal Antibody detects endogenous levels of SR-4 protein. |
| Formulation | Liquid in PBS containing 50% glycerol, 0.5% BSA and 0.02% sodium azide. |
| Source | Polyclonal, Rabbit,IgG |
| Purification | The antibody was affinity-purified from rabbit antiserum by affinity-chromatography using epitope-specific immunogen. |
| Dilution | Western Blot: 1/500 - 1/2000. Immunohistochemistry: 1/100 - 1/300. Immunofluorescence: 1/200 - 1/1000. ELISA: 1/5000. Not yet tested in other applications. |
| Concentration | 1 mg/ml |
| Purity | ≥90% |
| Storage Stability | -20°C/1 year |
| Synonyms | HTR4; 5-hydroxytryptamine receptor 4; 5-HT-4; 5-HT4; Serotonin receptor 4 |
| Observed Band | 43kD |
| Cell Pathway | Cell membrane; Multi-pass membrane protein. Endosome. Interaction with SNX27 mediates recruitment to early endosomes, while interaction with SLC9A3R1 and EZR might target the protein to specialized subcellular regions, such as microvilli. . |
| Tissue Specificity | Isoform 5-HT4(A) is expressed in ileum, brain, and atrium, but not in the ventricle. |
| Function | alternative products:Additional isoforms seem to exist,function:This is one of the several different receptors for 5-hydroxytryptamine (serotonin), a biogenic hormone that functions as a neurotransmitter, a hormone, and a mitogen. The activity of this receptor is mediated by G proteins that stimulate adenylate cyclase.,similarity:Belongs to the G-protein coupled receptor 1 family.,subcellular location:Interaction with SNX27 mediates recruitment to early endosomes, while interaction with SLC9A3R1 and EZR might target the protein to specialized subcellular regions, such as microvilli.,subunit:Isoform 5-HT4(A) interacts with MAGI2, MPP3, SLC9A3R1 and SNX27 isoforms 1 and 2. Isoform 5-HT4(E) interacts with INADL, NOS1 and SEC23A. Isoform 5-HT4(A) forms a complex including SLC9A3R1 and EZR.,tissue specificity:Isoform 5-HT4(A) is expressed in ileum, brain, and atrium, but not in the ventricle. |



Background

This gene is a member of the family of serotonin receptors, which are G protein coupled receptors that stimulate cAMP production in response to serotonin (5-hydroxytryptamine). The gene product is a glycosylated transmembrane protein that functions in both the peripheral and central nervous system to modulate the release of various neurotransmitters. Multiple transcript variants encoding proteins with distinct C-terminal sequences have been described. [provided by RefSeq, May 2010],

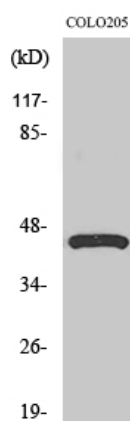
matters needing attention

Avoid repeated freezing and thawing!

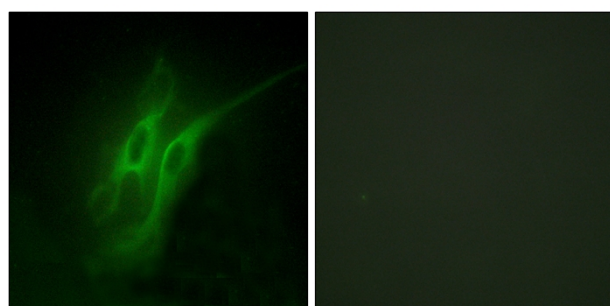
Usage suggestions

This product can be used in immunological reaction related experiments. For more information, please consult technical personnel.

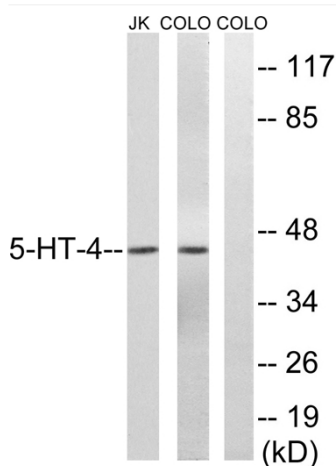
Products Images



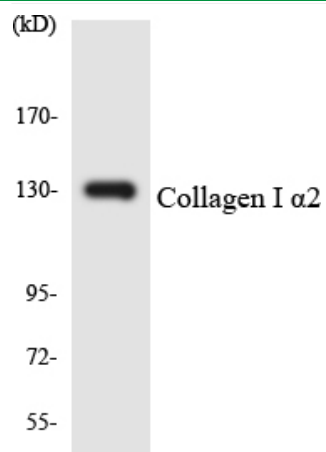
Western Blot analysis of various cells using SR-4 Polyclonal Antibody



Immunofluorescence analysis of HeLa cells, using 5-HT-4 Antibody. The picture on the right is blocked with the synthesized peptide.



Western blot analysis of lysates from Jurkat/COLO205, using 5-HT-4 Antibody. The lane on the right is blocked with the synthesized peptide.



Western blot analysis of the lysates from 293 cells using Collagen I α 2 antibody.